

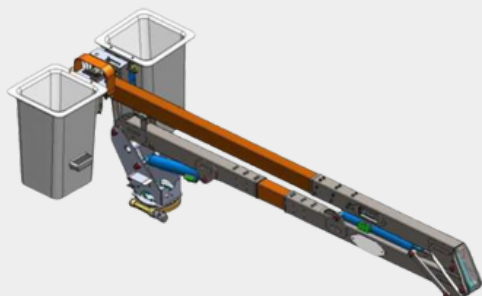
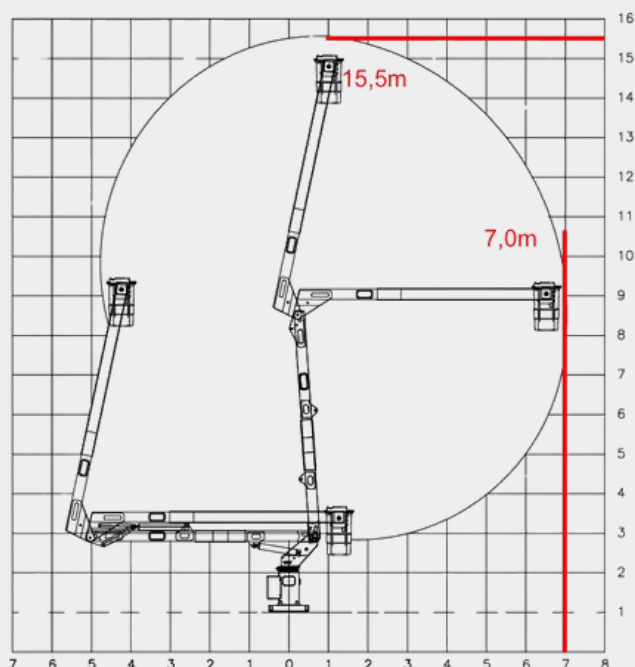
FORCE LIFT

FORCE Heavy 15,5 FDi



WORKING HEIGHT 15,5m	PLATFORM ROTATION 360°	OUTRIGGERS 4 x A
BASKET HEIGHT 14m	BASKET DIMENSIONS 0,7 x 0,7 x 1,1 m	CONTROLS Hydraulics
LATERAL REACH 7 m	BASKET TYPE Fiberglass	P.B.T. 11.000 kg
LOAD CAPACITY 136 kg 272kg	BASKET ROTATION 0°	WINCH No

WORK TABLE



The equipment is designed, manufactured, and tested in accordance with ANSI A92 and NBR 16092 standards, meeting the requirements established by the Ministry of Labor through NR-12, Annex XII, Chapter 2.

STRUCTURAL MATERIAL

- **Base, tower, arm, upper arm, front link:** Built with 100% Strenx® 700 material, offering extreme mechanical strength, lightness, and durability.
- **Shaft:** Manufactured in SAE 4140, treated and chrome-plated, ensuring high tensile strength and corrosion resistance.

SAFETY SYSTEM

- Equipped with A-type stabilizers at the front and rear of the vehicle, ensuring greater stability during operation.
- Includes safety valves on all hydraulic cylinders, as well as specific safety valves on the body, tower, and basket with the operators, increasing reliability and safety.

DIFFERENTIALS

- Equipment designed with Trelleborg cylinder seals, ensuring durability and efficiency even under severe conditions.
- High-strength material structure allows for a lighter design that minimizes vehicle wear and reduces maintenance needs.
- Hoses with a capacity of up to 190 BAR and optimized operation at 175 BAR, ensuring longer service life and less maintenance frequency.
- Joystick control, providing greater precision and ease in equipment operation.
- Basket with 90° + 90° rotation, allowing for greater flexibility and ease of positioning during operation.
- Equipped with a 60-liter oil tank, specially designed to prevent overheating in the hydraulic system, promoting greater efficiency and durability.

APPLICATIONS

- Maintenance of electrical grids and public lighting.
- Tree pruning in urban and rural areas.
- Operations in civil construction and facade painting.

FORCE LIFT

R. Alberto Magnusson, 337 - Comercial Vitoria
Martini Indaiatuba - SP, 13347-633