

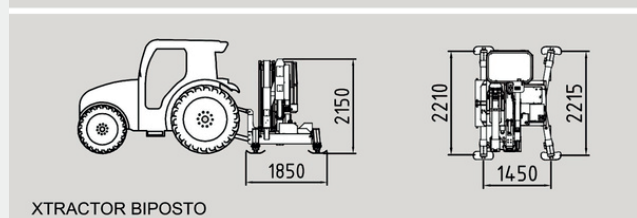
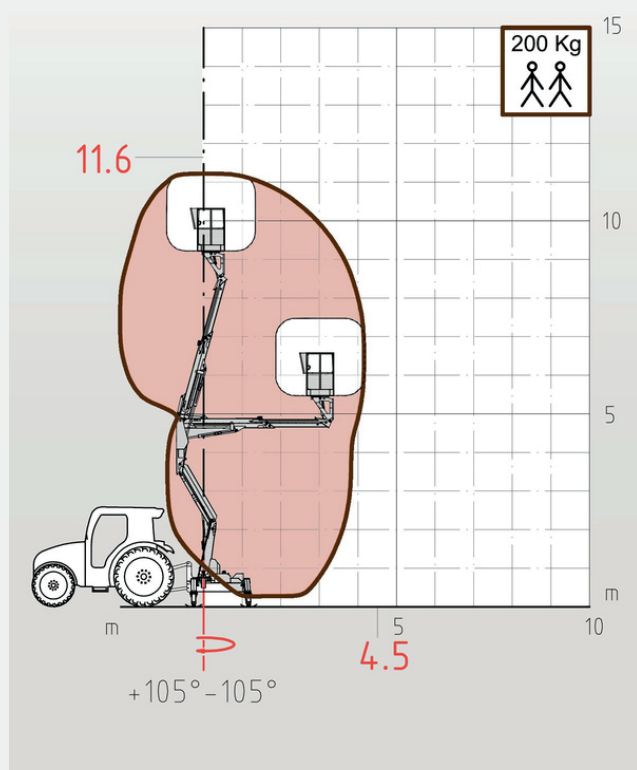
FORCE LIFT

XTRACTOR 12 BIPOSTO



WORKING HEIGHT 11,6m	HORIZONTAL REACH 4,5m	BASKET HEIGHT 9,6m
UP AND OVER HEIGHT 5m	BASKET CAPACITY 200kg - 2 Persons	STABILIZERS 4 Hydraulic
ROTATION 180°	CONTROLS Hydraulic	TOTAL WEIGHT 1600kg
MINIMUM OUTRIGGER FOOTPRINT 2400 x 1850mm	REQUIRED TRACTOR LIFTING CAPACITY 30kN	LOW WORKING PRESSURE

WORK TABLE



XTRACTOR BIPOSTO

The equipment is designed, manufactured, and tested in accordance with ANSI A92 and NBR 16092 standards, meeting the requirements established by the Brazilian Ministry of Labor under regulation NR-12, Annex XII, Chapter 2.

STANDARD FEATURES

Presentation: An aerial work platform built with high-strength steel for maximum boom rigidity and operator safety during work.

- **Mounting System:** The aerial platform is removable and can be mounted on any type of tractor by attaching it to the three-point hitch and lift arms.

Hydraulic Pump: The unit includes a hydraulic pump equipped with a kit for direct attachment to the tractor's PTO (Power Take-Off).

- **Subframe:** The subframe anchors the aerial platform to the tractor via its lift arms and three-point hitch, and stabilizes the platform on the ground using the outriggers.

- **Stability:** Stability is guaranteed by 4 "IN-SHAPE" type outriggers; each is composed of a double-acting hydraulic jack connected to the main hydraulic circuit.

- **Turret:** The turret, positioned on the subframe, provides boom support and 180° of rotation. Inside, a piston raises the pantograph mechanism.

- **Pantograph System:** The pantograph system deploys the platform by raising the telescopic boom. Its maximum height corresponds to the 5 m up-and-over clearance. The system consists of two arms connected by a head with simultaneous movement.

- **Telescopic Boom:** The telescopic boom consists of 2 sections (1 fixed + 1 telescopic extension). Hoses and pipes are routed inside the boom structure for maximum protection against damage or accidentally dropped tools. The telescopic boom allows for both vertical and horizontal movements.

- **Basket:** The basket is designed to support and protect operators. The aerial platform can be operated using controls located inside the basket.

- **Hydraulic Reservoir:** The hydraulic oil reservoir is positioned for easy access to check and refill the oil level.

- **Controls:** 100% hydraulic controls allow for smooth, gradual, and precise movements. The hydraulic system ensures a long service life for the platform with maintenance costs reduced to a minimum.

- **Construction:** The main structure and booms are made of high-strength steel to guarantee excellent stability for the entire platform.