

FORCE LIFT

SOLAR 11



WORKING HEIGHT
11m

REAR REACH
4m

STABILIZERS
4 Hydraulic

BASKET HEIGHT
9m

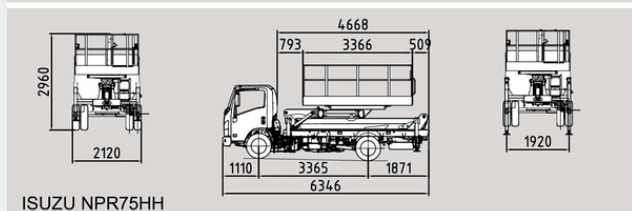
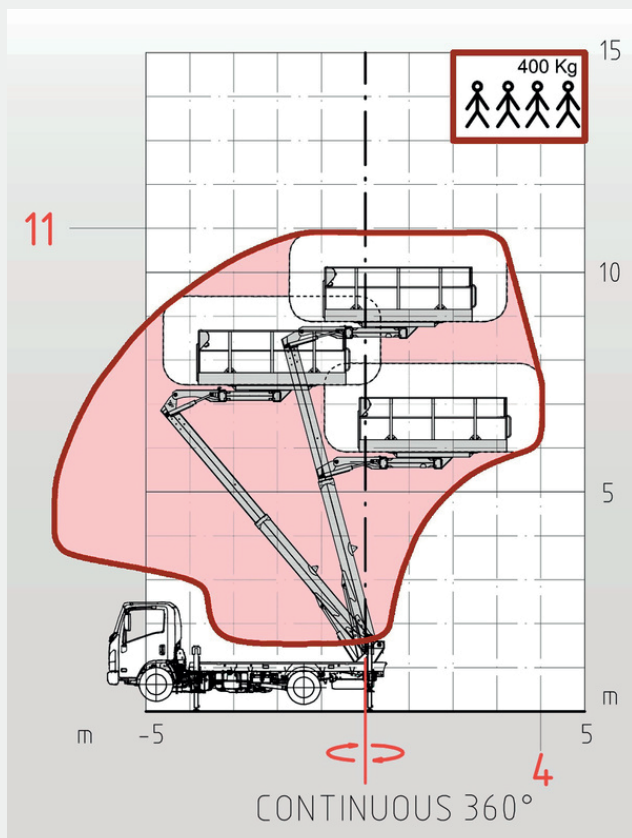
BASKET CAPACITY
400kg - 2 Persons

GVW
3,5 tons

HORIZONTAL REACH
3,5m

CONTROLS
Electro-hydraulic

WORK TABLE



ISUZU NPR75HH

The equipment is designed, manufactured, and tested in accordance with ANSI A92 and NBR 16092 standards, meeting the requirements established by the Brazilian Ministry of Labor under regulation NR-12, Annex XII, Chapter 2.

STANDARD FEATURES

Presentation: An aerial work platform built with high-strength steel for maximum boom rigidity and operator safety during work.

- The subframe is designed to couple the platform to the truck's chassis.
- The hydraulic oil reservoir is positioned for easy access to check and refill the oil level.
- Stability is guaranteed by 4 "IN-SHAPE" type outriggers, composed of four double-acting hydraulic jacks connected to the main hydraulic circuit.
- A dual-function turret supports and rotates the boom. A hydraulic motor coupled to a reducer enables 360° continuous rotation of the turret on a slew ring, and a rotary union mounted inside the turret allows for hydraulic connections between the fixed and rotating parts without twisting the hoses.
- The main telescopic boom is composed of 2 sections (1 fixed + 1 telescopic extension). The positioning of the telescopic cylinders and hoses inside the boom ensures protection against collisions, accidentally dropped tools, etc.
- The boom expands the platform's work envelope both vertically and horizontally.
- The basket is designed to support and protect operators. The aerial platform can be operated using controls located inside the basket.
- ELECTRO-HYDRAULIC CONTROLS with a proportional system to allow for gradual and precise movements.
- The steel structure and booms are made of high-strength steel to guarantee excellent stability for the entire platform.
- Ability to work on slopes up to 10°.
- Automatic basket leveling relative to the ground: in all working positions, inclinations, and ground conditions, the basket always remains perfectly level with the ground.
- DUAL BASKET MOVEMENT: lateral translation and 90° + 90° rotation.
- Constant 400kg basket payload without limitations (even without outriggers deployed), monitored by load cells.