

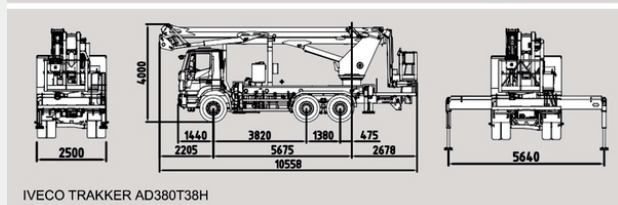
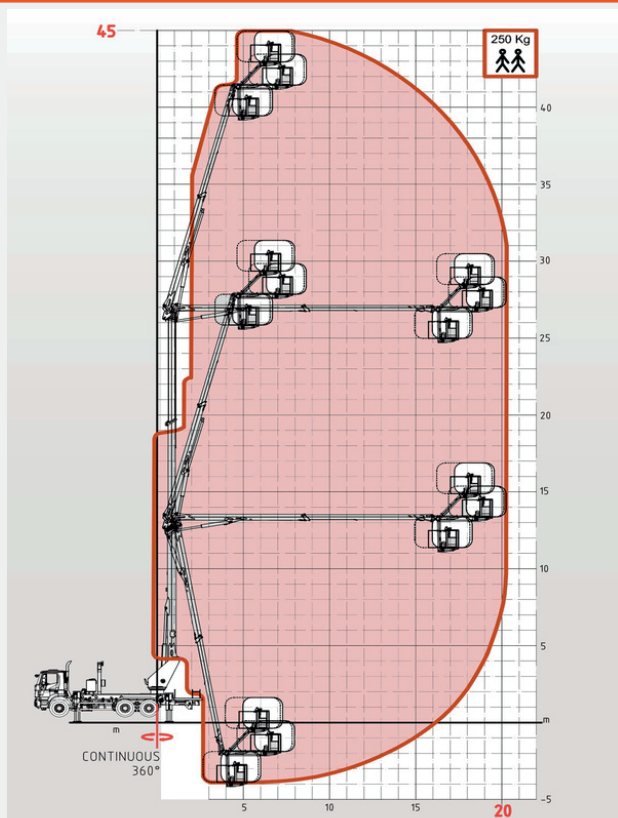
FORCE LIFT

NEW EUROSKY 45 2 20 T



WORKING HEIGHT 45m	ROTATION 360° continuous	STABILIZERS 4 Hydraulic
BASKET HEIGHT 43m	BASKET CAPACITY 280kg 2 persons	GVW 26 Tons
HORIZONTAL REACH 20m	CONTROLS Electro-hydraulic	

WORK TABLE



The equipment is designed, manufactured, and tested in accordance with ANSI A92 and NBR 16092 standards, meeting the requirements established by the Brazilian Ministry of Labor under regulation NR-12, Annex XII, Chapter 2.

STANDARD FEATURES

- Presentation:** An aerial work platform built with high-strength steel for maximum boom rigidity and operator safety during work.
- The subframe is designed to couple the platform to the truck's chassis.
 - Hydraulic oil reservoir integrated into the subframe with easy access.
 - Stability is guaranteed by 4 outriggers; each is composed of hydraulic jacks with double-acting valves connected to the main hydraulic circuit.
 - A dual-function turret provides support and rotation for the boom. A hydraulic motor coupled to a reducer allows for 360° continuous rotation on a slew ring. A rotary joint, mounted inside the turret, allows for movement without twisting the hoses.
 - The main telescopic boom is composed of 3 sections (1 fixed + 2 telescopic extensions).
 - Double Jib:
 - First articulating boom (JIB 1 - telescopic)
 - Second articulating boom (JIB 2)
 - The basket is designed to support and protect operators. The aerial platform can be operated using controls located inside the basket.
 - Electro-hydraulic controls: a hydraulic distributor and joystick controls allow for high precision movements. The steel structure and booms are made of high-strength steel to guarantee excellent stability for the entire platform.