

FORCE LIFT

LEOPARD 25



WORKING HEIGHT
25m

ROTATION
400°

STABILIZERS
4 Hydraulic

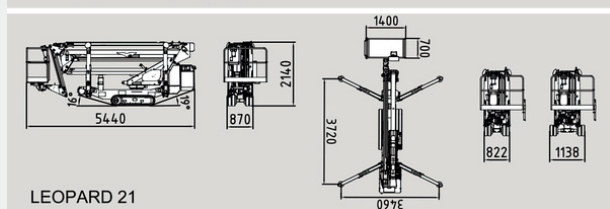
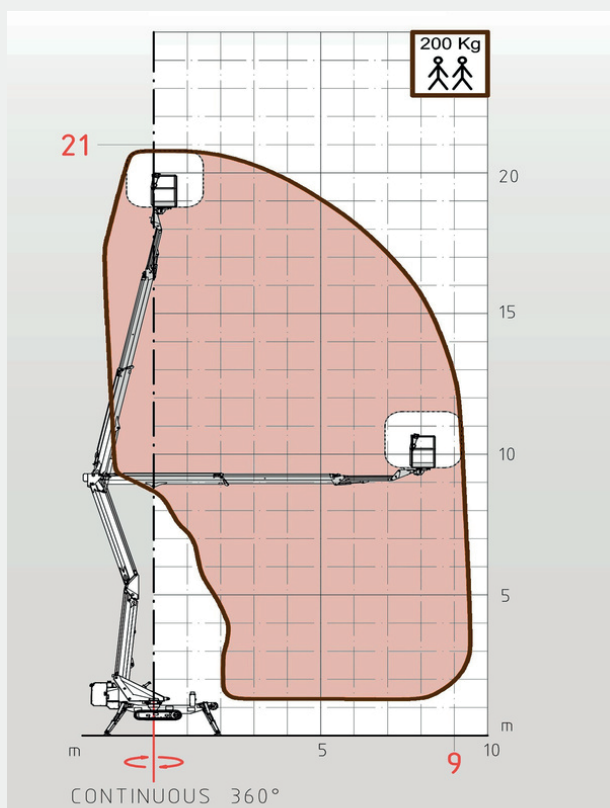
BASKET HEIGHT
23m

BASKET CAPACITY
200kg

CONTROLS
100% Electro-hydraulic

HORIZONTAL REACH
11,5m

WORK TABLE



LEOPARD 21

The equipment is designed, manufactured, and tested in accordance with ANSI A92 and NBR 16092 standards, meeting the requirements established by the Brazilian Ministry of Labor under regulation NR-12, Annex XII, Chapter 2.

STANDARD FEATURES

Presentation: Aerial platform manufactured with high-strength steel for maximum boom rigidity and maximum safety during work.

Hydraulic oil reservoir (100-liter capacity) integrated into the subframe and with easy access.

Stability is guaranteed by 4 stabilizers; each pair is composed of two hydraulic jacks with double-acting valves connected to the main hydraulic circuit.

Dual-function turret for boom support and rotation. A hydraulic motor coupled to a reducer allows for 360° continuous rotation of the turret.

Double pantograph to reach a working height of 11.5m.

The telescopic boom is composed of 3 sections (1 fixed + 2 telescopic extensions). Hoses and pipes are positioned inside the boom structure for maximum protection against damage or accidentally dropped tools, etc.

The telescopic boom allows for vertical and horizontal movements.

Basket with the objective of protecting and supporting operators working at height. In the basket there is a control panel to move the platform.

ELECTRO-HYDRAULIC CONTROLS with a proportional system to allow for gradual and precise movements.

The steel structure and booms are made of high-strength steel to guarantee great stability for the entire platform.

Support for the boom in the rest position

Maximum incline tolerance 30%

2 speeds 0.8 km/h – 1.3 km/h

GASOLINE ENGINE

Overall dimensions: L6685xW1040xH2100mm

Total weight 4200Kg