

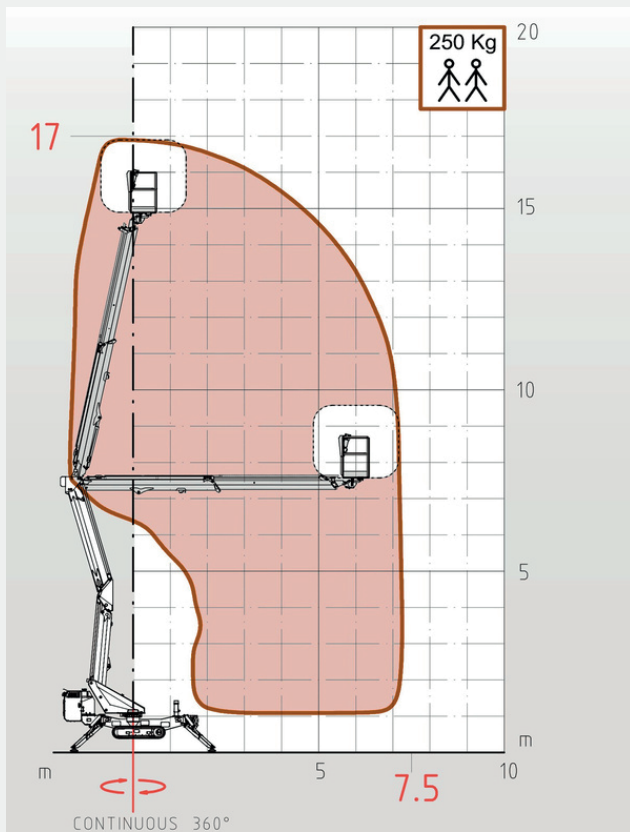
# FORCE LIFT

## LEOPARD 18



<b>WORKING HEIGHT</b> 17m	<b>ROTATION</b> 360°	<b>STABILIZERS</b> 4 Hydraulic
<b>BASKET HEIGHT</b> 16m	<b>BASKET CAPACITY</b> 250kg	<b>CONTROLS</b> 100% Electro-hydraulic
<b>HORIZONTAL REACH</b> 7,5m		

### WORK TABLE



### STANDARD FEATURES

**Presentation:** Aerial platform manufactured with high-strength steel for maximum boom rigidity and maximum safety during work. Hydraulic oil reservoir (56-liter capacity) integrated into the subframe and with easy access.

Stability is guaranteed by 4 stabilizers; each pair is composed of two hydraulic jacks with double-acting valves connected to the main hydraulic circuit.

Dual-function turret for boom support and rotation. A hydraulic motor coupled to a reducer allows for 360° continuous rotation of the turret.

Double pantograph to reach a working height of 7.5m.

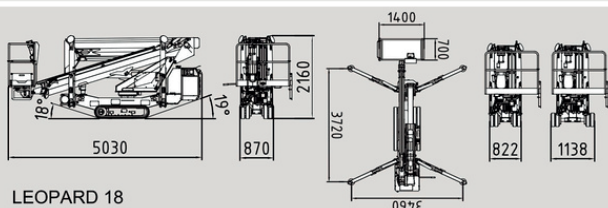
The telescopic boom is composed of 2 sections (1 fixed + 1 telescopic extension). Hoses and pipes are positioned inside the boom structure for maximum protection against damage or accidentally dropped tools, etc.

The telescopic boom allows for vertical and horizontal movements. Basket with the objective of protecting and supporting operators working at height. In the basket there is a control panel to move the platform.

ELECTRO-HYDRAULIC CONTROLS with a proportional system to allow for gradual and precise movements.

The steel structure and booms are made of high-strength steel to guarantee great stability for the entire platform.

- Limiter
- Retractable tracks
- Radio remote control for tracks and upper structure
- Automatic leveling and "home" function
- Support for the boom in the rest position
- Maximum incline tolerance 30%
- 2 speeds 0.8 km/h – 1.3 km/h
- GASOLINE ENGINE (Kohler 14 HP)
- Overall dimensions: L5030xW870xH2160MM
- Total weight 2000Kg



LEOPARD 18

The equipment is designed, manufactured, and tested in accordance with ANSI A92 and NBR 16092 standards, meeting the requirements established by the Brazilian Ministry of Labor under regulation NR-12, Annex XII, Chapter 2.