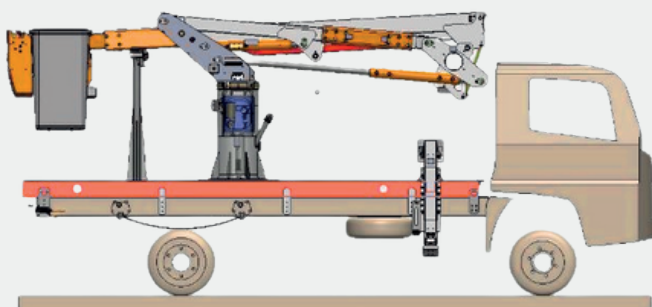


FORCE LIFT

FORCE LIGHT 13,72 FTDI



WORKING HEIGHT
13,72m

PLATFORM ROTATION
360°

OUTRIGGERS
2 x A

BASKET HEIGHT
12,22m

BASKET DIMENSION
0,7 x 0,7 x 1,1 m

CONTROLS
Hydraulic

LATERAL REACH
8m

BASKET TYPE
Fiberglass

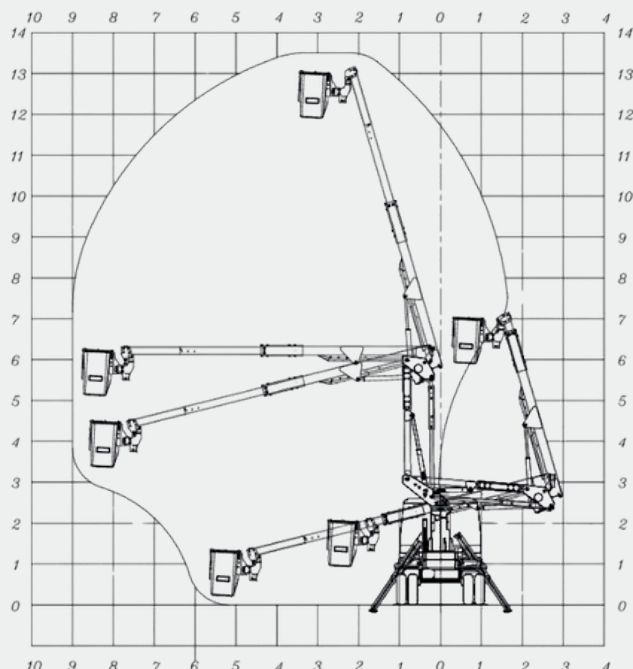
GVW
6.000kg

LOAD CAPACITY
136kg | 225kg

BASKET ROTATION
90° + 90°

WINCH
No

WORK TABLE



The equipment is designed, manufactured, and tested in accordance with ANSI A92 and NBR 16092 standards, meeting the requirements established by the Ministry of Labor through NR-12, Annex XII, Chapter 2.

STRUCTURAL MATERIAL

Base, tower, arm, front link, and telescopic arm: Constructed with 100% Strenx® 700 material, providing extreme mechanical strength, lightness, and durability. Axle: Made from SAE 4140 treated and chrome-plated steel, ensuring high tensile strength and corrosion protection.

SAFETY SYSTEM

- Equipped with A-type outriggers on the front of the vehicle, ensuring greater stability during operation.
- Includes safety valves in all hydraulic cylinders, plus specific safety valves in the body, tower, and operator basket, increasing reliability and safety.

KEY DIFFERENTIATORS

- Equipment designed with Trelleborg cylinder seals, ensuring durability and efficiency even in severe conditions.
- High-strength material structure, allowing for a lighter design that minimizes vehicle wear and reduces maintenance needs.
- Hoses with capacity up to 190 BAR and optimized operation at 175 BAR, ensuring longer lifespan and reducing maintenance frequency.
- Joystick control, providing greater precision and ease of equipment operation.
- Basket with 90° + 90° rotation capability, allowing for greater flexibility and ease of positioning during operation.
- Equipped with a 60-liter oil tank, specially designed to prevent overheating in the hydraulic system, promoting greater efficiency and durability.
- Vehicle Engine Remote Start/Stop System, offering convenience to the operator and greater operational efficiency.
- Equipment designed and calculated using finite element analysis methods, ensuring greater structural reliability and optimized performance.
- 13.72 FTDi (This seems to be a measurement or model specific to the equipment, so it's kept as is).

APPLICATIONS

- Maintenance of electrical grids and public lighting.
- Tree pruning in urban and rural areas.
- Operations in civil construction and facade painting.

FORCE LIFT

R. Alberto Magnusson, 337 - Comercial Vitoria
Martini Indaiatuba - SP, 13347-633