

FORCE LIFT

EUROSKY-I 18 2 12 ANSI



WORKING HEIGHT
18m

ROTATION
360° continuous

ESTABILIZADORES
Hidráulicos n.4

BASKET HEIGHT
16m

GVW
11 Tons

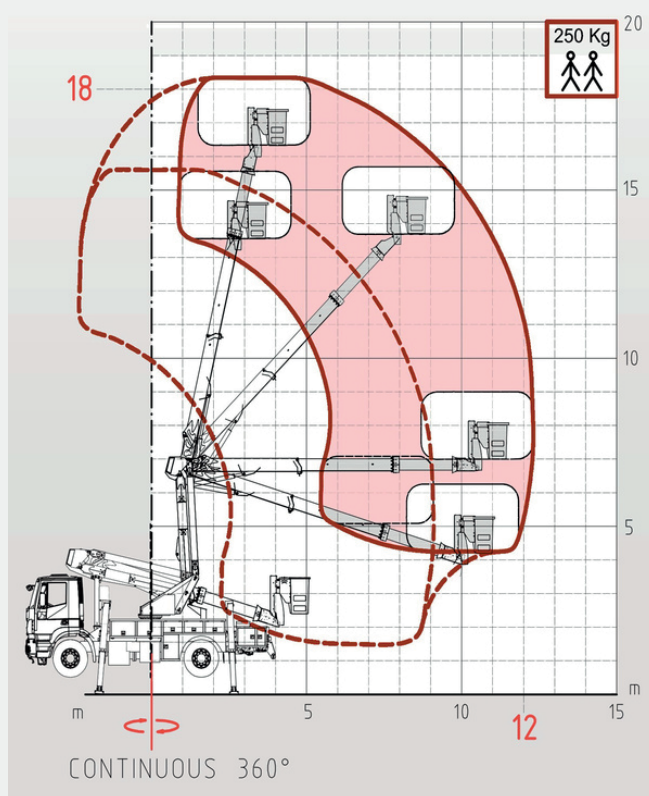
INSULATION RATING
46-138 KV, Category C (per ANSI/SIA A92.2)

HORIZONTAL REACH
12m

BASKET CAPACITY
125kg | 125kg

CONTROLS
100% low-pressure hydraulic

WORK TABLE



STANDARD FEATURES

Presentación: An insulated aerial device (IAD) built with high-strength steel for maximum boom rigidity and operator safety.

- The subframe is designed to couple the platform to the truck's chassis.

- A hydraulic oil reservoir is integrated into the subframe and is easily accessible.

- Stability is guaranteed by 4 outriggers, each composed of hydraulic jacks with double-acting valves connected to the main hydraulic circuit.

- A dual-function turret provides support and rotation for the boom. A hydraulic motor coupled to a reducer allows for 360° continuous rotation on a slew ring. A rotary joint inside the turret allows for movement without twisting the hoses.

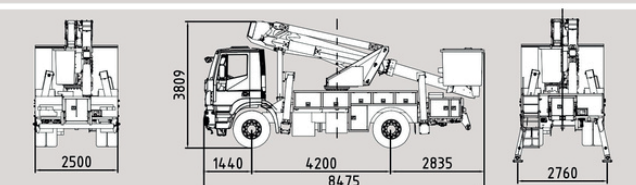
- Single Pantograph System: Raises the platform vertically without changing the basket's horizontal position relative to the slew ring's center.

- Insulated Telescopic Boom: The boom consists of 2 sections (1 fixed + 1 telescopic extension), with the upper boom section featuring dielectric insulation rated up to 46-115KV. Hoses and pipes are routed inside the boom structure for maximum protection.

- Dual Insulated Baskets: Equipped with two separate one-person fiberglass baskets, each with dimensions of L 800 x W 600 x H 1100 mm and insulated up to 46-115KV. The baskets are operated via controls located inside.

- Controls: 100% hydraulic controls with a low-pressure (only 25 BAR) proportional system provide smooth and precise movements, ensuring a long service life with minimal maintenance costs.

- Construction: The steel structure and lower boom are made of high-strength steel to guarantee excellent stability for the entire platform.



IVECO TRAKKER AD190T38WH 4x4

The equipment is designed, manufactured, and tested in accordance with ANSI A92 and NBR 16092 standards, meeting the requirements established by the Brazilian Ministry of Labor under regulation NR-12, Annex XII, Chapter 2.

FORCE LIFT

R. Alberto Magnusson, 337 - Comercial Vitória
Martini Indaiatuba - SP, 13347-633