

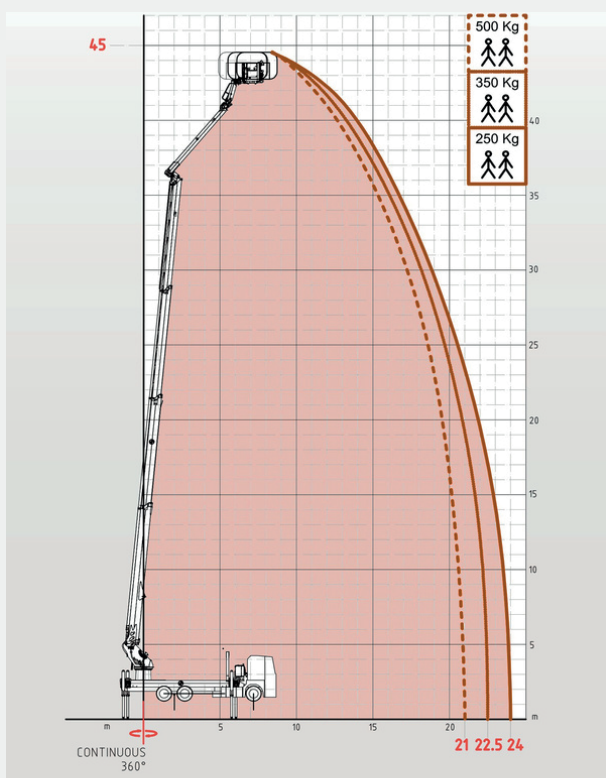
FORCE LIFT

EUROFLAG 45 24 HQ



WORKING HEIGHT 45m	HORIZONTAL REACH 500kg 19,5m	TURRET ROTATION 360° continuous
HORIZONTAL REACH 350kg 25,5m	BASKET CAPACITY 500/350/250kg	BASKET ROTATION +/- 45°
HORIZONTAL REACH 250kg 24m		

WORK TABLE



STANDARD EQUIPMENT

Introduction: The Euroflag 45 platform must be installed on trucks with suitable technical characteristics for its assembly. The characteristics listed below are indicative for a standard installation. For each installation, Officinecomet spa will verify the compatibility between the Euroflag 45 and the proposed truck in order to meet all technical and safety requirements.

DIMENSIONS & WEIGHT

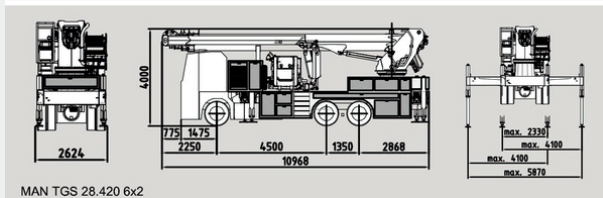
Overall Length 10.97 m (1)
Overall Height < 4 m
Overall Width 2.55 m
Minimum GVW 24,000 kg (2)
Basket Dimensions (LxWxH) 2.20 x 1.0 x 1.1 m
Stretcher Platform 1.37 x 0.50 m
Minimum Outrigger Spread 2.33 m
Maximum Outrigger Spread 5.87 m

- (1) Depending on the installation and truck model.
(2) Minimum weight required for the indicated performance, depending on the installation.

FIREFIGHTING SYSTEM

Max. Water Flow Rate 4000 / 6000 L/min (1)
Max. Pressure 12 bar (1)
Water Monitor Rotation +/- 45°
Water Monitor Tilt +/- 35° (2)

- (1) Dependent on the installed waterway.
(2) Depending on the installed monitor model.



MAN TGS 28.420 6x2

The equipment is designed, manufactured, and tested in accordance with ANSI A92 and NBR 16092 standards, meeting the requirements established by the Brazilian Ministry of Labor under regulation NR-12, Annex XII, Chapter 2.