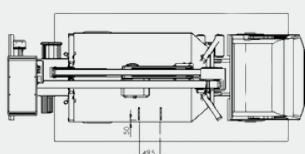
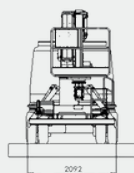
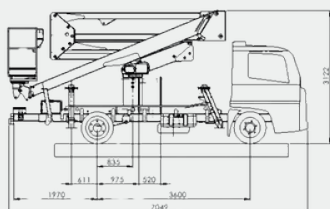
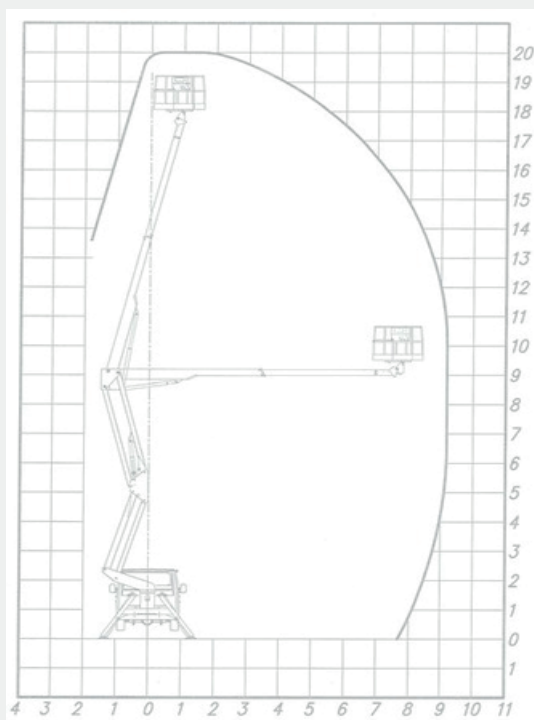


FORCE LIFT

FORCE LIGH 20AT



WORK TABLE



The equipment is designed, manufactured, and tested in accordance with ANSI A92 and NBR 16092 standards, meeting the requirements established by the Ministry of Labor through NR-12, Annex XII, Chapter 2.

WORKING HEIGHT 20m	PLATFORM ROTATION 360°	OUTRIGGERS A x A
BASKET HEIGHT 18m	BASKET DIMENSION 1,4 x 0,7 x 1,1 m	CONTROLS Electric
LATERAL REACH 9,5m	BASKET TYPE Aluminum	GVW 3,500kg
LOAD CAPACITY 225kg	BASKET ROTATION 90° + 90°	WINCH No

STANDARD EQUIPMENT

Overview: We're presenting the FORCE Light 20AT double-articulated bucket truck with a telescopic boom, designed to be mounted on the chassis of small vehicles. It features a high-quality steel structure. The base supporting the structure is located above the sub-chassis.

Boom Holder Tower: Made of steel plate, it comprises a main folded body and electro-welded reinforcements. It's installed on the base that supports the structure.

Rotation: Rotation is ensured by the base assembly, hydraulic motor, and worm screw, allowing for a maximum of 7 rotations in each direction.

Basket Leveling: System with a mechanical leveling bar, activated in conjunction with the platform's articulated boom.

Double Pantograph Arm Group: This group allows for a reduction in installation width, and a distribution of stabilizing loads that helps overcome obstacles between the equipment and the work area.

Operational Boom: The boom is tubular in design, with a working range from -25° to +70° based on the horizontal.

Hydraulic System Power Supply: Powered by a hydraulic pump coupled to the truck's power take-off.

TECHNICAL SPECIFICATIONS

- Aluminum Basket
- Proportional hydraulic controls
- High-quality steel structure
- 360° tower rotation

SAFETY DEVICES

- Emergency stop buttons
- Manual pump for emergency descent
- Manual controls
- Shielded lockout valves on all cylinders
- Maximum pressure valves on the hydraulic system
- Safety belt hooks in the basket
- Basket controls equipped with horn and vehicle engine start/stop

EQUIPMENT OPTIONAL FEATURES

- 1 Kv Insulation / Fiberglass basket

FORCE LIFT

R. Alberto Magnusson, 337 - Comercial Vitoria
Martini Indaiatuba - SP, 13347-633