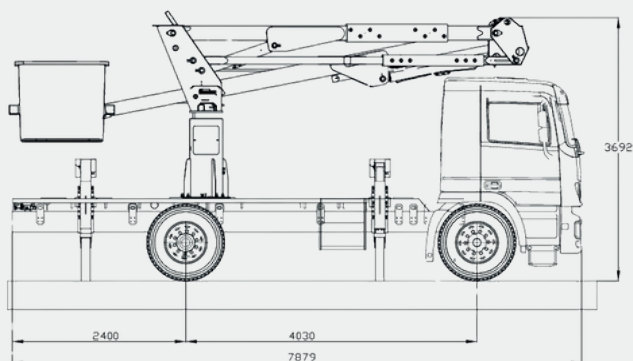


# FORCE LIFT

## 18 FTDI



**WORKING HEIGHT**  
18m

**PLATFORM ROTATION**  
360°

**OUTRIGGERS**  
4 x A

**BASKET HEIGHT**  
16,5m

**BASKET DIMENSION**  
0,7 x 0,7 x 1,1 m

**CONTROLS**  
Hydraulic

**LATERAL REACH**  
10m

**BASKET TYPE**  
Fiberglass

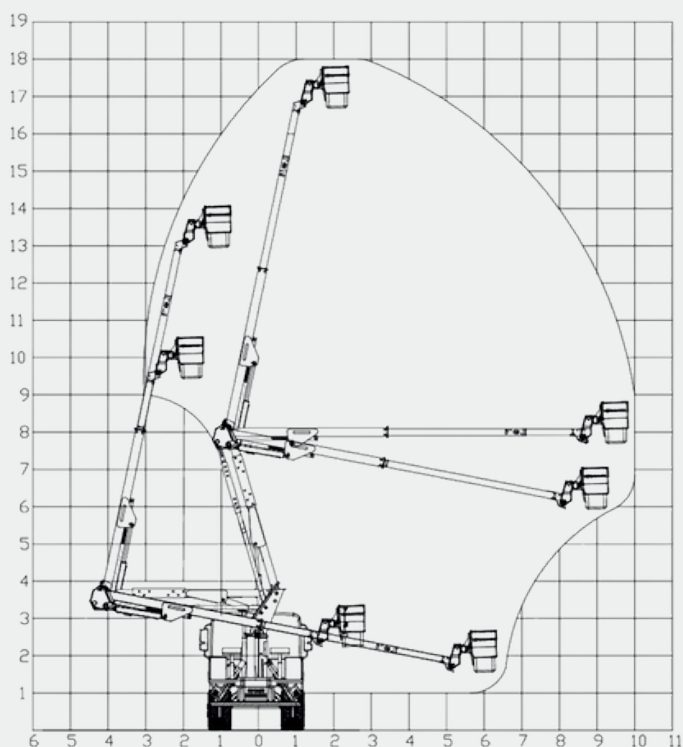
**GVW**  
14.000kg

**LOAD CAPACITY**  
225kg

**BASKET ROTATION**  
90° + 90°

**WINCH**  
No

## WORK TABLE



## STRUCTURAL MATERIAL

**Base, tower, boom, front link, and telescopic boom:** Constructed with 100% Strenx® 700 material, providing extreme mechanical resistance, lightness, and durability.

**Axle:** Manufactured from processed and chrome-plated SAE 4140, ensuring high tensile strength and corrosion protection.

## SAFETY SYSTEM

- Equipped with A-type outriggers at both the front and rear of the vehicle, ensuring greater stability during operation.
- Includes safety valves on all hydraulic cylinders, in addition to specific safety valves on the body, tower, and basket with the operators, increasing reliability and safety.

## KEY DIFFERENTIATORS

- Trelleborg cylinder seals, guaranteeing durability and efficiency even in severe conditions.
- High-strength material structure, allowing for a lighter design that minimizes vehicle wear and reduces maintenance needs.
- Hoses with a capacity of up to 190 BAR and optimized operation at 175 BAR, ensuring a longer lifespan and reducing maintenance frequency.
- Joystick control\*, providing greater precision and ease in operating the equipment.
- Basket with 90° + 90° rotation, allowing for greater flexibility and ease of positioning during operation.
- Equipped with an 80-liter oil reservoir, specially designed to prevent hydraulic system overheating, promoting greater efficiency and durability.
- Remote vehicle engine start/stop system, offering convenience to the operator and greater operational efficiency.
- Equipment designed and calculated using finite element analysis methods, ensuring greater structural reliability and optimized performance.

## APPLICATIONS

- Maintenance of electrical grids and public lighting.
- Tree pruning in urban and rural areas.
- Operations in civil construction and facade painting.

The equipment is designed, manufactured, and tested in accordance with ANSI A92 and NBR 16092 standards, meeting the requirements established by the Ministry of Labor through NR-12, Annex XII, Chapter 2.

**FORCE LIFT**

R. Alberto Magnusson, 337 - Comercial Vitoria  
Martini Indaiatuba - SP, 13347-633