

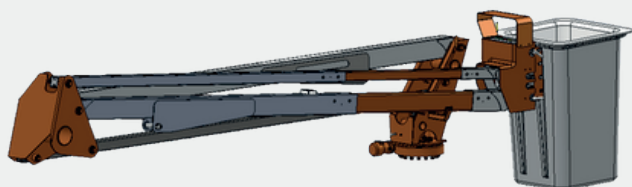
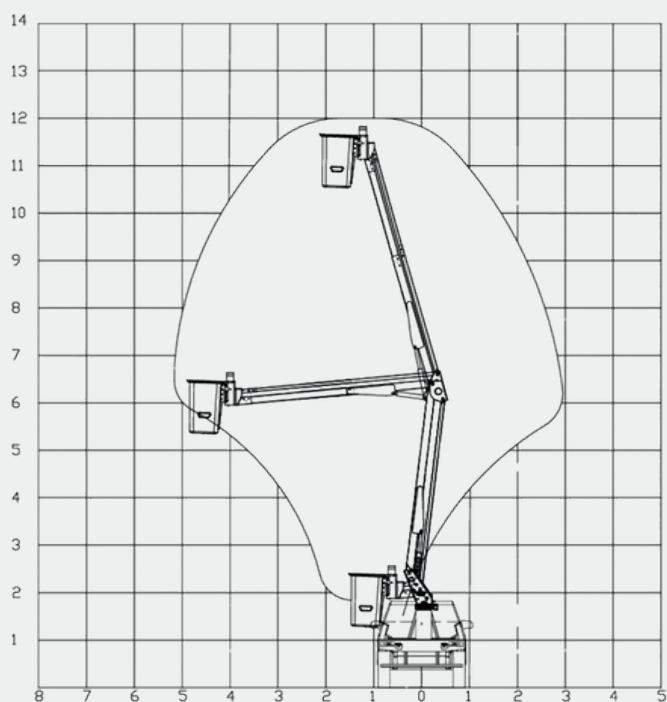
FORCE LIFT

FORCE L1GTH 12AI



WORKING HEIGHT 12m	PLATFORM ROTATION 360°	OUTRIGGERS 2 x A
BASKET HEIGHT 10,5m	BASKET DIMENSION 0,7 x 0,7 x 1,1 m	CONTROLS Hydraulic
LATERAL REACH 5,2m	BASKET TYPE Fiberglass	GVW 3.000kg
LOAD CAPACITY 136 kg	BASKET ROTATION 0°	WINCH No

WORK TABLE



STRUCTURAL MATERIAL

Base, tower, boom, front link, and upper boom: Constructed with 100% Strenx® 700 material, providing extreme mechanical resistance, lightness, and durability.

Axle: Manufactured from heat-treated and chrome-plated SAE 4140, ensuring high tensile strength and corrosion protection.

SAFETY SYSTEM

- Equipped with A-type outriggers at the rear of the vehicle, ensuring greater stability during operation.
- Includes safety valves on all hydraulic cylinders, in addition to specific safety valves on the body, tower, and basket with the operators, increasing reliability and safety.

KEY DIFFERENTIATORS

- Equipment designed with Trelleborg cylinder seals, guaranteeing durability and efficiency even in harsh conditions.
- High-strength material structure, allowing for a lighter design that minimizes vehicle wear and reduces maintenance needs.
- Hoses with a capacity of up to 190 BAR and optimized operation at 150 BAR, ensuring a longer lifespan and reducing maintenance frequency.
- Equipped with a 22-liter oil tank, specially designed to prevent overheating in the hydraulic system, promoting greater efficiency and durability.
- Equipment designed and calculated using finite element analysis methods, ensuring greater structural reliability and optimized performance.

KEY DIFFERENTIATORS

- Maintenance of electrical grids and public lighting.
- Tree pruning in urban and rural areas.
- Operations in civil construction and facade painting.

The equipment is designed, manufactured, and tested in accordance with ANSI A92 and NBR 16092 standards, meeting the requirements established by the Ministry of Labor through NR-12, Annex XII, Chapter 2.

FORCE LIFT

R. Alberto Magnusson, 337 - Comercial Vitoria
Martini Indaiatuba - SP, 13347-633