

FORCE LIFT

XTRAILER 12



WORKING HEIGHT
12m



MAX. LATERAL OUTREACH
4,5m



BASKET FLOOR
10m



BRIDGING HEIGHT
5m



MAX. BASKET CAPACITY
200 kg | 2 persone



TOT. WEIGHT PTT
1300Kg



ROTATION
360° (180°+180°)

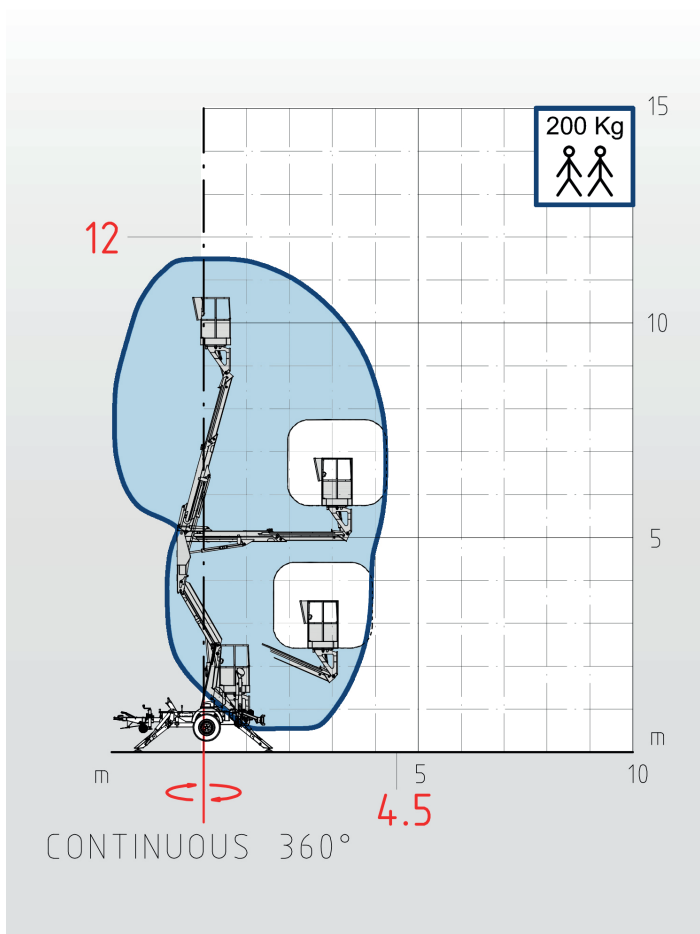


CONTROLS
100% hydraulic



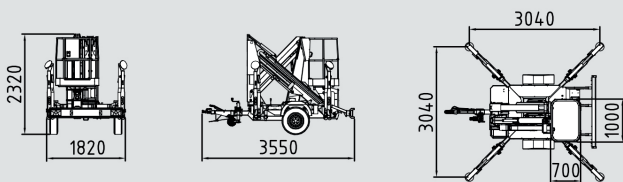
OUTRIGGERS
Hydraulic n.4

WORKING PLATFORM DIMENSIONS



STANDARD EQUIPMENT

- Aerial platform made of high strength steel for boom maximum rigidity and maximum safety while working.
- The subframe with the aim to couple the platform with chassis.
- Hydraulic oil tank in easy to reach position to check and restore the oil level.
- Stability is given by No.4 outriggers; made up of two hydraulic jacks with double effect valve connected to the main hydraulic circuit.
- Double purpose turret for boom support and rotation. It is positioned on the subframe and allows the rotation, thanks to a system activated by one hydraulic engine and one slewing bearing. Inside there is a piston that lifts the pantograph.
- The pantograph with the aim to open the platform by lifting the telescopic boom. The maximum height of the pantograph coincides with the maximum bridging height. The pantograph is made of 2 booms connected through a head with simultaneous movements.
- The telescopic boom is made of 2 elements (1 fixed + 1 telescopic extension).
- The basket is made to support and protect the operators. The aerial platform can be moved by means of controls positioned on the basket. Mounted on a trailer to be easily connected to different cars and vehicles
- TOTAL WEIGHT STARTING FROM 1300 KG
- 100% hydraulic controls to allow gradual and accurate movements. The hydraulic system guarantees a long-lasting life to the platform with maintenance costs reduced to its minimum.
- The steel structure and the booms are made of high strength steel to grant great stability to the whole platform.
- Maximum load on the hook 100kg
- Repulsion brake with safety chains
- Parking brake
- Rear bumper with repetitive lights standard plug, tail lights and reflex reflectors



XTRAILER 12 PETROL