

# FORCE LIFT

## NEW EUROSKY 45/2/20 T



**WORKING HEIGHT**  
45m



**MAX. LATERAL OUTREACH**  
20m



**BASKET TFLOOR**  
43m



**ROTATION**  
360° continuous



**MAX. BASKET CAPACITY**  
250 kg | 2 persone



**MINIMUM GVW PTT**  
26ton

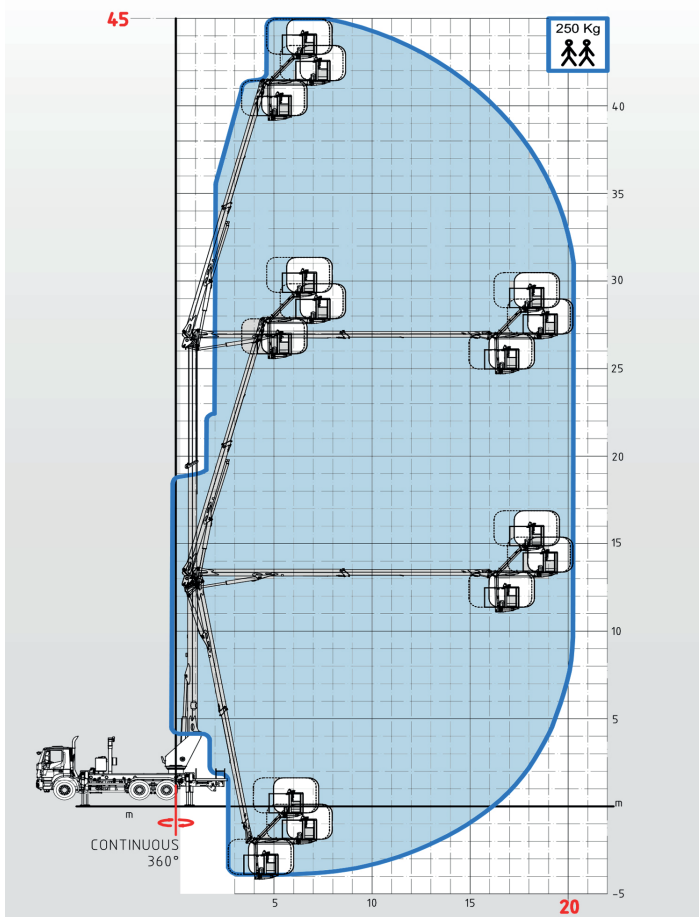


**OUTRIGGERS**  
Hydraulic n.4



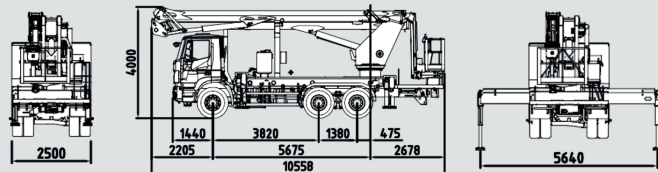
**CONTROLS**  
Electro-hydraulic

### WORKING PLATFORM DIMENSIONS



### STANDARD EQUIPMENT

- Aerial platform made of high strength steel for boom maximum rigidity and maximum safety while working.
- The subframe with the aim to couple the platform with truck chassis.
- Hydraulic oil tank integrated in the subframe and easy to access.
- Stability is given by No.4 outriggers; each pair is made of two hydraulic jacks with double effect valve connected to the main hydraulic circuit.
- Double purpose turret for boom support and rotation. One hydraulic engine coupled with one reducer allows 360° continuous rotation on fifth wheel. One rotating joint, assembled inside the turret, allows movements without hose twisting.
- The main telescopic boom is made of 3 elements (1 fixed + 2 telescopic extensions).
- Double JIB:
  - First articulated boom (JIB 1 telescopic)
  - Second articulated boom (JIB 2)
- The basket is made to support and protect the operators. The aerial platform can be moved by means of controls positioned on the basket.
- Electro-hydraulic controls: hydraulic distributor and joystick controls to allow great accuracy in movements.
- The steel structure and the booms are made of high strength steel to grant great stability to the whole platform.



IVECO TRAKKER AD380T38H