

# FORCE LIFT

## NEW EUROSKY - 31/2/17 HQ JIB



**WORKING HEIGHT**  
31m



**MAX. LATERAL OUTREACH**  
17m



**BASKET FLOOR**  
29m



**BRIDGING HEIGHT**  
11,5m



**CAPACITY**  
250 kg | 2 persone



**PESO BRUTO MÍNIMO**  
7 toneladas



**ROTATION**  
360° continuous

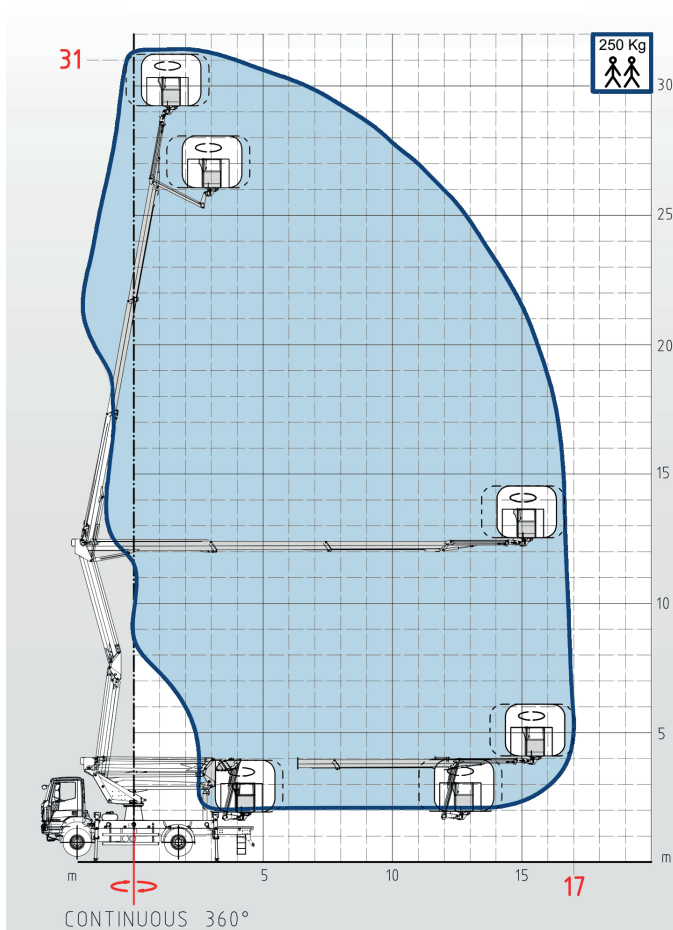


**CONTROLS**  
100% hydraulic low pressure



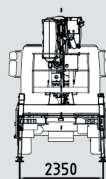
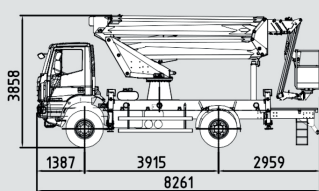
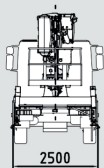
**OUTRIGGERS**  
Hydraulic n.4

### WORKING PLATFORM DIMENSIONS



### STANDARD EQUIPMENT

- Aerial platform made of high strength steel for boom maximum rigidity and maximum safety while working.
- The subframe with the aim to couple the platform with truck chassis.
- Hydraulic oil tank integrated in the subframe and easy to access.
- Stability guaranteed by No.4 outriggers, each pair is made of two hydraulic jacks with double effect valve connected to the main hydraulic circuit.
- Double purpose turret for boom support and rotation. One hydraulic engine coupled with one reducer allows 360° continuous rotation on fifth wheel. One rotating joint, assembled inside the turret, allows movements without hose twisting.
- Double pantograph to lift the platform without modifying the basket position in respect to the fifth wheel coupling center. The maximum height of the pantograph coincides with the maximum bridging height. The pantograph is composed of 2 booms connected through a head with simultaneous movements.
- The telescopic boom is made of 3 elements (1 fixed + 2 telescopic extensions). Hoses and pipes are positioned inside the boom structure for maximum protection against damages or accidental fall of tools, etc. The telescopic boom allows vertical and horizontal movements.
- Articulated boom (JIB) allows to clear obstacles in the working area. It is positioned at the end of the telescopic boom and gives the possibility even to work at a height in unreachable working position.
- The basket is made to support and protect the operators. The aerial platform can be moved by means of controls positioned on the basket.
- 100% hydraulic controls with proportional system in low pressure (25 BAR only) in the basket to allow gradual and accurate movements. The hydraulic system guarantees a long-lasting life to the platform with maintenance costs reduced to its minimum.
- The steel structure and the booms are made of high strength steel to grant great stability to the whole platform.



EUROCARGO ML110E25 4x4