

# FORCE LIFT

## LEOPARD 25



**WORKING HEIGHT**  
25m



**MAX. LATERAL OUTREACH**  
11,5m



**BASKET FLOOR**  
23m



**MAX. BASKET CAPACITY**  
200Kg



**ROTATION**  
400°

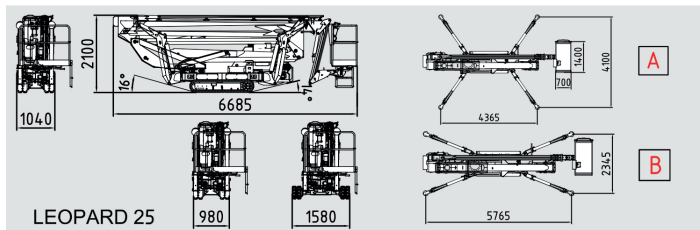
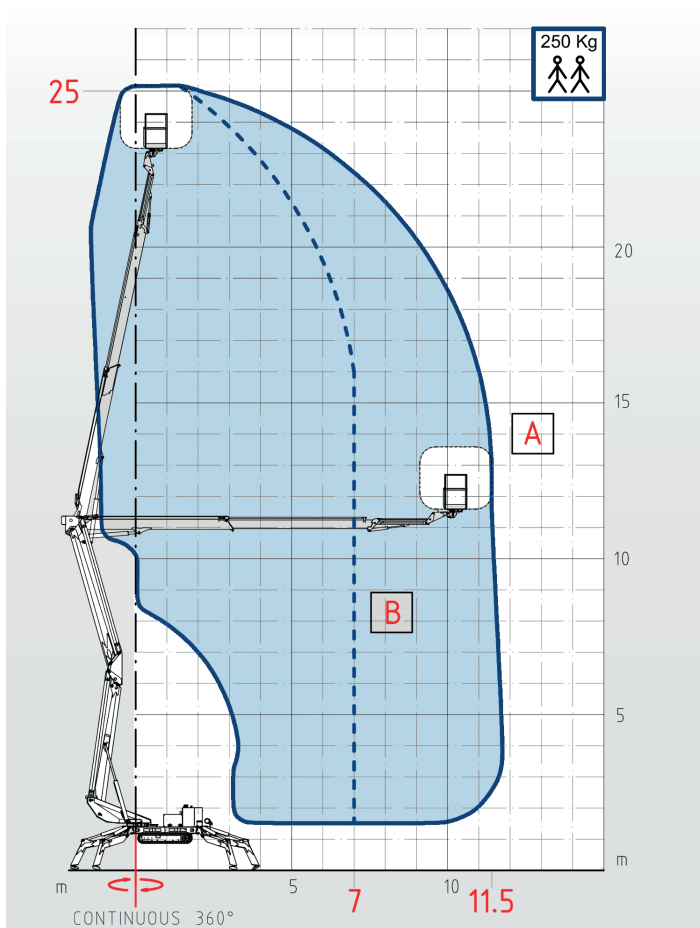


**OUTRIGGERS**  
Hydraulic n.4



**CONTROLS**  
100% Electro-hydraulic

### WORKING PLATFORM DIMENSIONS



### STANDARD EQUIPMENT

- Aerial platform made of high strength steel for boom maximum rigidity and maximum safety while working.
  - Hydraulic oil tank (100 lt capacity) integrated in the subframe and easy to access.
  - Stability is given by No.4 outriggers; each pair is made of two hydraulic jacks with double effect valve connected to the main hydraulic circuit.
  - Double purpose turret for boom support and rotation. One hydraulic engine coupled with one reducer allows turret 360° continuous.
  - Double pantograph to reach a bridging height of 11.5m.
  - The telescopic boom is made of 3 elements (1 fixed + 2 telescopic extension). Hoses and pipes are positioned inside the boom structure for maximum protection against damages or accidental fall of tools, etc. The telescopic boom allows vertical and horizontal movements.
  - Basket with the aim to protect and support the operators working at a height, in the basket there is a controls panel to move the platform.
  - ELECTRO-HYDRAULIC CONTROLS with proportional system to allow gradual and accurate movements.
  - The steel structure and the booms are made of high strength steel to grant great stability to the whole platform.
  - Support for boom in rest position
  - Maximum inclination tolerance 30%
  - 2 speeds 0.8 km/h – 1.3 km/h
  - PETROL ENGINE
  - Total dim: L6685Xw1040XH2100mm
- Total weight 4200Kg