

FORCE LIFT

LEOPARD 18



WORKING HEIGHT
17m



MAX. LATERAL OUTREACH
7,5m



BASKET FLOOR
16m



MAX. BASKET CAPACITY
250Kg



ROTATION
360°

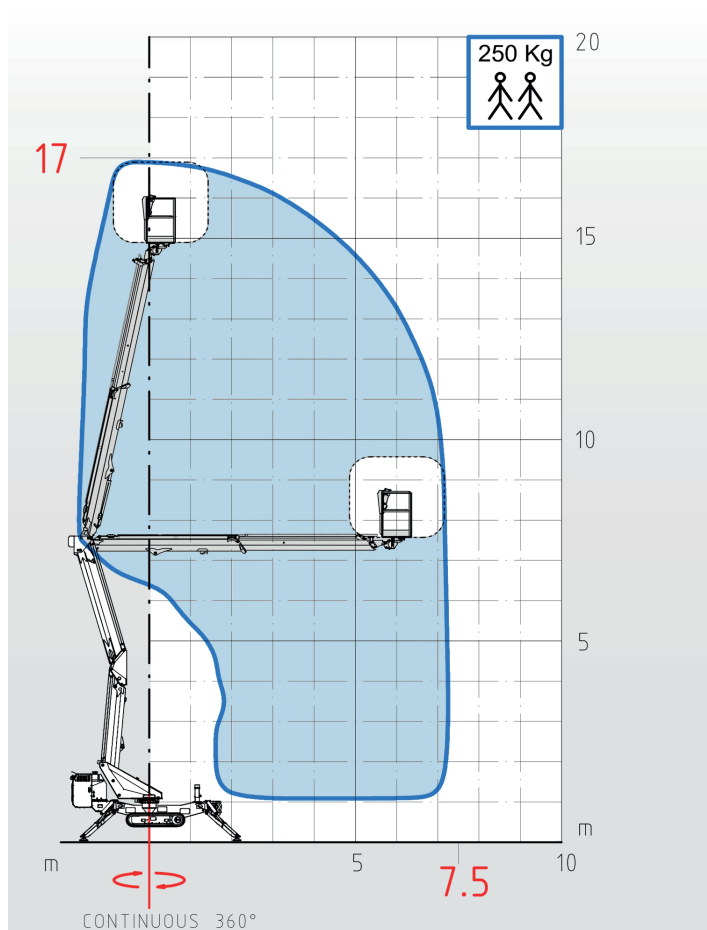


OUTRIGGERS
Hydraulic n.4



CONTROLS
100% Electro-hydraulic

WORKING PLATFORM DIMENSIONS



STANDARD EQUIPMENT

- Aerial platform made of high strength steel for boom maximum rigidity and maximum safety while working.
- Hydraulic oil tank (56 lt capacity) integrated in the subframe and easy to access.
- Stability is given by No.4 outriggers; each pair is made of two hydraulic jacks with double effect valve connected to the main hydraulic circuit.
- Double purpose turret for boom support and rotation. One hydraulic engine coupled with one reducer allows turret 360° continuous.
- Double pantograph to reach a bridging height of 7,5m.
- The telescopic boom is made of 2 elements (1 fixed + 1 telescopic extension). Hoses and pipes are positioned inside the boom structure for maximum protection against damages or accidental fall of tools, etc. The telescopic boom allows vertical and horizontal movements.
- Basket with the aim to protect and support the operators working at a height, in the basket there is a controls panel to move the platform.
- ELECTRO-HYDRAULIC CONTROLS with proportional system to allow gradual and accurate movements.
- The steel structure and the booms are made of high strength steel to grant great stability to the whole platform.
- Limiter
- Extending tracks
- Radio control for tracks and upper part
- Self levelling and home function
- Support for boom in rest position
 - Maximum inclination tolerance 30%
 - 2 speeds 0.8 km/h – 1.3 km/h
 - PETROL ENGINE (Kohler HP 14)
 - Total dim: L5030XW870xH2160MM

Total weight 2000Kg

