

FORCE LIFT

FORCE LIGHT 24AT



**MAXIMUM
HEIGHT**
24m



**TURRET
ROTATION**
360°



OUTRIGGERS
A + A



**BASKET
HEIGHT**
221m



**BASKET
DIMENSION**
1,4 x 0,7 x 1,1 m



CONTROLS
Hydraulic



**LATERAL
REACH**
11m



**BASKET
TYPE**
Aluminio



G.V.W
4.000 kg



**LOAD
CAPACITY**
225kg

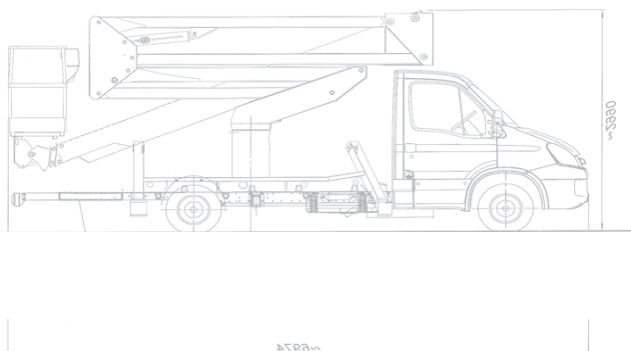
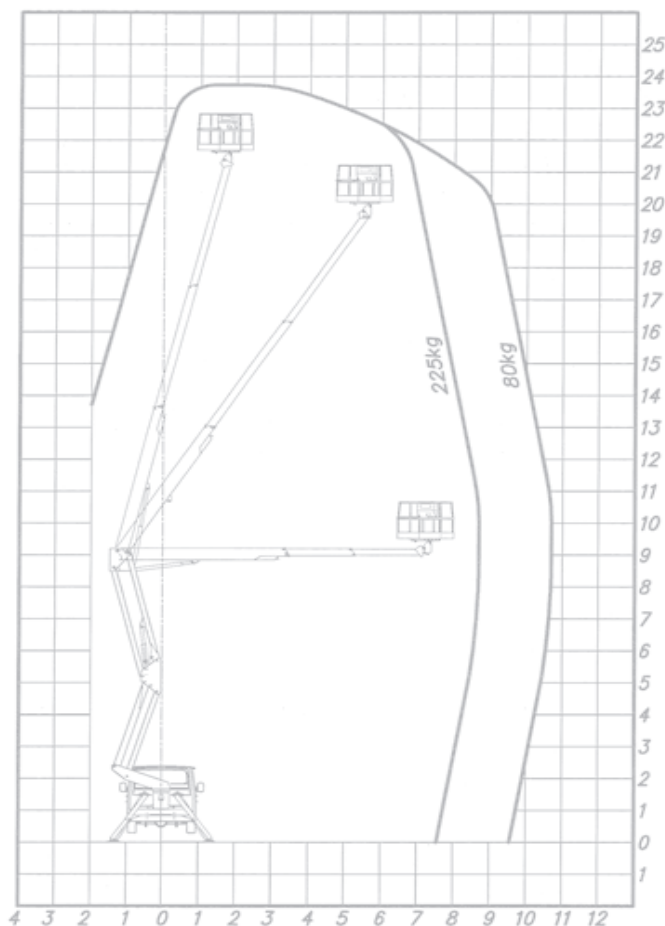


**BASKET
ROTATION**
90° + 90°



WINCH
No

WORKING PLATFORM DIMENSIONS



STANDARD EQUIPMENT

Presentation: We present the double-articulated aerial platform with a bi-telescopic boom, FORCE Light 24AT. High-quality steel structure. Above the sub-chassis is the base that supports the structure.

Boom support turret: Made of steel sheet, it consists of a folded main body and electro-welded reinforcements. It is installed on the base that supports the structure.

Rotation: Rotation is guaranteed by the base assembly, hydraulic motor, and worm screw, with a maximum of 7 turns in each direction of rotation.

Basket leveling: System with mechanical leveling bar, activated together with the articulated boom of the platform.

Double pantograph bar group: Allows the reduction of the installation width, a distribution of stabilizing loads allows overcoming obstacles between the equipment and the work area.

Operational boom: Boom in tubular execution, with a working area from -25° to +70° based on the horizontal.

Hydraulic system power supply: Power supply with hydraulic pump coupled to the truck's PTO.

Controls: Fully hydraulic controls, located at the base and in the basket, electric hour meter in the vehicle cabin.

TECHNICAL CHARACTERISTICS

- Aluminum basket
- Proportional hydraulic controls
- High-quality steel structure
- 360° turret rotation

SAFETY DEVICES

- Emergency stop buttons
- Manual pump for emergency descent
- Manual controls for emergency descent
- Armored shut-off valve on all cylinders
- Maximum pressure valves on the hydraulic system
- Hooks for safety belts in the basket
- Basket control equipped with horn and vehicle engine start/stop